



Professional HEAVY DUTY

GLA 18VH-7500

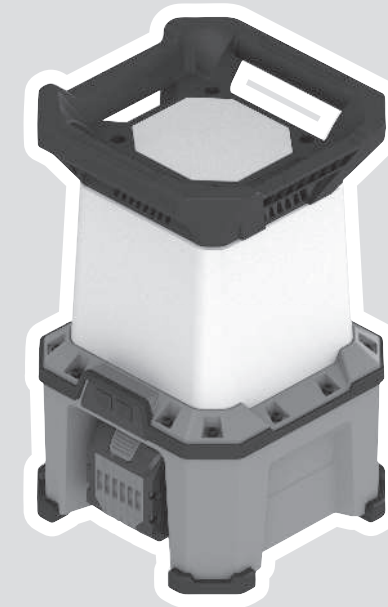
Robert Bosch Power Tools GmbH
70538 Stuttgart
GERMANY

www.bosch-pt.com

1 609 92A 9RE (2026.01) TAG / 13



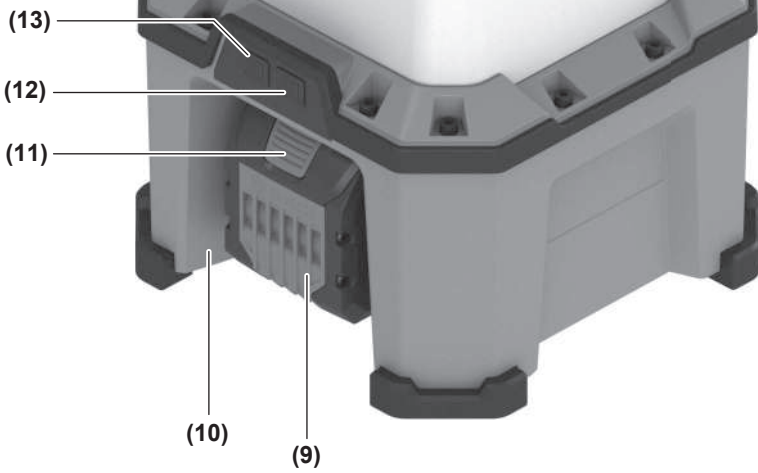
1 609 92A 9RE



en Original instructions







English

Safety Instructions

Safety Instructions for Worklights



Read all the safety information and instructions. Failure to observe the safety information and follow instructions may result in electric shock, fire and/or serious injury.

Save all warnings and instructions for future reference.

- ▶ Please read and observe all safety and general instructions included with the battery or with the power tool supplied with the battery.
- ▶ **Handle the worklight with care.** The worklight generates a lot of heat, which can lead to an increased risk of fire and explosion.
- ▶ **Do not use the worklight in potentially explosive atmospheres.**
- ▶ **Do not press the on/off switch again after the worklight has switched off automatically.** This can damage the rechargeable battery. Ensure that the rechargeable battery is charged and that the worklight has cooled down before switching the worklight on again.
- ▶ **The light source contained in the worklight may only be replaced by the manufacturer or qualified specialists.**



Maintain the minimum distance between the worklight and all illuminated surfaces and objects. Illuminated objects may overheat

if this distance is not maintained.

- ▶ **Do not cover the worklight head while the light is in operation.** The worklight head warms up during operation and can cause burns if this heat accumulates.
- ▶ **Remove the rechargeable battery from the worklight or pull out the mains plug before transporting or storing it.** The worklight may heat up.
- ▶ **Use a residual current device when operating the worklight in a damp environment.** Use of an RCD reduces the risk of electric shock.
- ▶ **When using the worklight in an elevated position, secure it adequately with a fall protection system.** This will enable you to avoid material damage and personal injury if you inadvertently drop the worklight.
- ▶ **Do not secure the cordless worklight to electrical cables or other non-secure objects.** There is a risk of fire and injury.
- ▶ **If the worklight is secured with a utility hook, do not strain it with additional weight and check that the hold is secure.** Utility hooks are designed to solely bear the weight of the worklight and an inserted rechargeable battery. If there is additional weight, the worklight could break or fall down.
- ▶ **If the cordless worklight is secured with a magnet or utility hook, do not move the cordless worklight or the**

object to which it is secured. The cordless worklight could fall down.

- ▶ **Do not sit or step on the worklight.** The worklight could become damaged.
- ▶ **Avoid dust accumulation at the workplace.** Dust can easily ignite.
- ▶ **In case of damage and improper use of the battery, vapours may be emitted. The battery can set alight or explode.** Ensure the area is well ventilated and seek medical attention should you experience any adverse effects. The vapours may irritate the respiratory system.
- ▶ **If used incorrectly or if the battery is damaged, flammable liquid may be ejected from the battery. Contact with this liquid should be avoided. If contact accidentally occurs, rinse off with water. If the liquid comes into contact with your eyes, seek additional medical attention.** Liquid ejected from the battery may cause irritation or burns.
- ▶ **The battery can be damaged by pointed objects such as nails or screwdrivers or by force applied externally.** An internal short circuit may occur, causing the battery to burn, smoke, explode or overheat.
- ▶ **When the battery is not in use, keep it away from paper clips, coins, keys, nails, screws or other small metal objects that could make a connection from one terminal to another.** A short circuit between the battery terminals may cause burns or a fire.
- ▶ **Do not open the battery.** There is a risk of short-circuiting.



Protect the battery against heat, e.g. against continuous intense sunlight, fire, dirt, water and moisture. There is a risk of explosion and short-circuiting.



▶ **Products sold in GB only:**

Your product is fitted with an BS 1363/A approved electric plug with internal fuse (ASTA approved to BS 1362). If the plug is not suitable for your socket outlets, it should be cut off and an appropriate plug fitted in its place by an authorised customer service agent. The replacement plug should have the same fuse rating as the original plug. The severed plug must be disposed of to avoid a possible shock hazard and should never be inserted into a mains socket elsewhere.

- ▶ **Only charge the batteries using chargers recommended by the manufacturer.** A charger that is suitable for one type of battery may pose a fire risk when used with a different battery.
- ▶ **Only use the battery in the manufacturer's products.** This is the only way in which you can protect the battery against dangerous overload.

Product Description and Specifications

Please observe the illustrations at the beginning of this operating manual.

Intended Use

The worklight is intended for mobile illumination of indoor areas in a limited space and for a limited time and is not suitable for general room lighting.

Product Features

The numbering of the product features refers to the diagram of the worklight on the graphics page.

- (1) Carrying handle
- (2) Lamp head
- (3) USB Type-C® port
- (4) Power connection
- (5) 5/8" tripod mount
- (6) GLT 300-40 tripod mount
- (7) Utility hook
- (8) Attachment area for fall protection system
- (9) Rechargeable battery^{a)}
- (10) Battery holder
- (11) Battery release button^{a)}
- (12) On/off switch
- (13) Illuminated area button

a) **This accessory is not part of the standard scope of delivery.**

Technical Data

Light	GLA 18VH-7500	
Article number	3 601 DA5 0..	
Max. rated power input for mains operation	W	100
Max. rated power input for battery operation	W	100
Colour rendering index	> 80	
USB connection type	USB Type-C ^{®A)}	
- Output voltage	V=	5.0–9.0
- Output current	A	1.67–3.0
Total luminous flux ^{B)}		
- Level 1	lm	2500
- Level 2	lm	5000
- Level 3	lm	7500
Protection class	□/II	
Battery operation		
Lighting duration, approx. ^{B)C)}	min/Ah	12
Recommended ambient temperature during charging	°C	0 to +35
Permitted ambient temperature during operation ^{D)} and during storage	°C	-20 to +40
Compatible rechargeable batteries	GBA18V... GBA 18V... ProCORE18V...	

Light	GLA 18VH-7500	
		EXPERT18V... EXBA18V... CORE18V...
Recommended battery chargers		GAL18... GAL 18... GAL 36... GAL12V/18... GAL 12V/18... GAX 18... EXAL18...

- A) USB Type-C® and USB-C® are trademarks of USB Implementers Forum.
- B) Measured at 20–25 °C with rechargeable battery **ProCORE18V 4.0Ah**
- C) At maximum brightness incl. remaining operating time in dimmed mode
- D) Limited performance at temperatures < 0 °C

Values can vary depending on the product, scope of application and environmental conditions. To find out more, visit www.bosch-professional.com/wac.

The colour rendition of illuminated objects can be distorted.

The product has a light source of energy efficiency class E.

Power supply

The light can be powered via a **Bosch** 18 V lithium-ion rechargeable battery (9) or via a kettle lead plug inserted in the power connection (4).

Mains operation

- ▶ **Never use the light if the cable is damaged.** If a cable is damaged, replace it with a suitable kettle lead. **Bosch** supplies suitable cables.
- ▶ **The light is supplied with energy from the mains as soon as a kettle lead is connected, even if a battery is inserted.**

Open the flap covering the power connection (4). Insert the kettle lead plug into the power connection (4) socket. Connect the kettle lead to the mains supply. The light can now be operated.

After removing the kettle lead, close the flap covering the power connection (4) to protect against dirt and debris.

Rechargeable battery

Bosch also sells worklights without a rechargeable battery. You can tell whether a rechargeable battery is included with the worklight by looking at the packaging.

Charging the battery

- ▶ **Use only the chargers listed in the technical data.** Only these chargers are matched to the lithium-ion battery of the worklight.

Note: Lithium-ion rechargeable batteries are supplied partially charged according to international transport regulations. To ensure full rechargeable battery capacity, fully charge the rechargeable battery before using your tool for the first time.

Inserting the Battery

Push the charged battery into the battery holder until it clicks into place.

Removing the Battery



To remove the rechargeable battery, press the battery release button and pull the battery out. **Do not use force to do this.**

The rechargeable battery has two locking levels to prevent the battery from falling out if the battery release button is pressed unintentionally. The rechargeable battery is held in place by a spring when fitted in the power tool.

Battery charge indicator

Note: Not all battery types have a battery charge indicator.

The green LEDs on the battery charge indicator indicate the state of charge of the battery. For safety reasons, it is only possible to check the state of charge when the power tool is not in operation.

Press the button for the battery charge indicator  or  to show the state of charge. This is also possible when the battery is removed.

If no LED lights up after pressing the button for the battery charge indicator, then the battery is defective and must be replaced.

Rechargeable battery type GBA 18V... | GBA18V...



LED	Capacity
3 × continuous green light	60–100 %
2 × continuous green light	30–60 %
1 × continuous green light	5–30 %
1 × flashing green light	0–5 %

Battery model ProCORE18V... | EXPERT18V... | EXBA18V... | CORE18V...



LED	Capacity
5 × continuous green light	80–100 %
4 × continuous green light	60–80 %
3 × continuous green light	40–60 %
2 × continuous green light	20–40 %
1 × continuous green light	5–20 %
1 × flashing green light	0–5 %

Cordless Battery Charge Indicator (Worklight)


In battery operation, the five LEDs on the battery charge indicator indicate the state of charge of the rechargeable battery when the worklight is switched on.


In mains operation, the current state of charge of the battery is not indicated.


Battery defect risk detection

EXPERT18V... | EXBA18V...

In addition to the state of charge of the rechargeable battery, the LEDs on the battery charge indicator can also indicate the risk of a battery defect.

To activate the function, press and hold the button for the battery charge indicator  for 3 seconds. The analysis of the battery is signalled by a moving light on the battery charge indicator. The result of is shown on the battery charge indicator.

 **1 LED:** The rechargeable battery has a high defect risk. Performance and runtime may already be reduced. Replacing the rechargeable battery is recommended.

 **5 LEDs:** The rechargeable battery is in good condition and has a low defect risk.

Please note: The rechargeable battery defect risk assessment works in a binary manner and offers a simplified status assessment, indicating either that the rechargeable battery is in good condition or that the rechargeable battery has an increased defect risk. A percentage of the battery status is not shown.

Recommendations for Optimal Handling of the Battery

Protect the battery against moisture and water.

Only store the battery within a temperature range of -20 to 50 °C. Do not leave the battery in your car in the summer, for example.

Occasionally clean the ventilation slots on the battery using a soft brush that is clean and dry.

A significantly reduced operating time after charging indicates that the battery has deteriorated and must be replaced. Follow the instructions on correct disposal.

Operation

Setting up

Place the worklight on a stable, level surface. Make sure it is secure.

Switching on/off and adjusting the brightness

On/off switch	Function
Press 1 ×	Switches on the worklight, low brightness
Press 2 ×	Switches on the worklight, medium brightness
Press 3 ×	Switches on the worklight, full brightness
Press 4 ×	Switches off the worklight

If the worklight has been switched on for approx. 5 minutes, it is switched off immediately with the next press.

Adjusting the Illuminated Area

Use the illuminated area button **(13)** to set the illuminated area to 360° or 180°.

Temperature-dependent overload protection

If the permissible operating temperature is exceeded, the brightness is first reduced before the worklight switches off for protection if necessary. Allow the worklight to cool down and switch the worklight on again.

Charging External USB Devices

You can use the USB port to increase the battery runtime of various battery-operated USB devices, e.g. mobile phones, MP3 players or tablets.

► **Ensure that your external USB device can be charged using the USB port. Refer to the specifications related to this topic in "Technical data".**

- Plug the charging cable of your USB device into the USB socket (3).
- Press the on/off button to activate.

To save energy, the USB port is automatically deactivated after approx. 2 hours once charging is complete or the charging cable has been disconnected.

Practical Advice

The worklight will flash three times and light up with reduced brightness just before it is about to switch off due to an empty battery.

Utility hook

You can use the utility hook (7) to hang up the worklight.

► **Do not use the utility hook to pull objects.** The utility hook or the worklight could break.

Fastening to the Tripod (BT 160/BT 170 HD/BT 300 HD)

You can use the tripod mount (5) to screw the worklight onto a tripod.

Attach the worklight firmly to the tripod. Ensure that the worklight cannot come loose and/or fall over.

Ensure that the tripod has a firm footing.

Fastening to the Tripod (GLT 300-40)

You can use the tripod quick-release mount (6) to mount the worklight onto a tripod.

Attach the worklight to the tripod.

Ensure that the tripod has a firm footing.

Attaching the Fall Protection System

Note: A fall protection system that is suitable for the weight of the entire system should be used to prevent the worklight from falling. The maximum permitted length of the fall protection system is 0.5 m.

It is best to use the fall protection system with a tape loop secured by an anchor knot on the handle or a fall protection system with fall damper.

Please always refer to the operating instructions when attaching the fall protection system.

► **Select the fixed anchorage point such that the worklight can fall freely into the fall protection system without putting the user at risk of harm in the event of a fall. It is essential the opposite side of the fall protection system is secured to a solid structure (e.g., build-**

ing or scaffolding).

The fall protection system must be able to move freely and may only be attached to the worklight in the permitted attachment area (8).

Maintenance and Service

Maintenance and Cleaning

► **Remove the rechargeable battery from the worklight before carrying out any work on the worklight (e.g. installation, maintenance, etc.) and during transport and storage.** There is risk of injury from unintentionally pressing the on/off switch.

The worklight is maintenance-free and contains no parts that need to be replaced or serviced.

Only clean the plastic pane of the worklight with a dry, soft cloth to avoid damage. Do not use any detergents or solvents.

After-Sales Service and Application Service

Great Britain

Tel. Service: (0344) 7360109

GB Importer:

Robert Bosch Ltd.
Broadwater Park
North Orbital Road
Uxbridge
UB9 5HJ

Malaysia

Tel.: (03) 79663194

In all correspondence and spare parts orders, please always include the 10-digit article number given on the nameplate of the product.

Disposal

The worklights, batteries, accessories and packaging should be recycled in an environmentally friendly manner.



Do not dispose of worklights and rechargeable batteries/batteries in the household waste.

Only for EU countries and United Kingdom:

Electrical and electronic equipment or used batteries that are no longer suitable for use must be collected separately and disposed of in an environmentally friendly manner. Use the designated collection systems. Incorrect disposal may cause harmful effects on the environment and human health, due to the potential presence of hazardous substances.

Product Data Information according to regulation (EU) 2023/2854

Connected products or related services generate data during their use. The following sections inform about the generated

data related to the product and how the product data can be accessed.

Type of Product Data

The product may generate the following type of data during its use. The actual generated data depends on the particular usage of the product.

- Operating time
- Battery information
- Component temperatures
- Activation of functions
- Failure and service events
- Application information

Product Data Logging

Information about collection of product data and data storage:

- Less than 1 kB of product data is logged.
- The product is capable to store product data on-device while the product is powered on.

Data Access and Data Format

Information how data can be accessed or retrieved by the user:

- Within the EU the user can request the product data via Bosch Power Tools service (email: **PT-Service.EU-DataAct@de.bosch.com**), if the user sends the device to a Bosch service, and/or
- If the product provides a wireless interface the user can get direct access to the product data via the corresponding Bosch Power Tools mobile application.
- The data is provided in a commonly used and machine-readable format (e.g., JSON).

Legal Information and Licenses

Apache 2.0

CMSIS_5, v5.9.0

Copyright 2009-2020 Arm Limited. All rights reserved.

Licensed under the Apache License, Version 2.0 (the "License"); you may not use this file except in compliance with the License.

You may obtain a copy of the License at

<http://www.apache.org/licenses/LICENSE-2.0>

Unless required by applicable law or agreed to in writing, software distributed under the License is distributed on an "AS IS" BASIS, WITHOUT WARRANTIES OR CONDITIONS OF ANY KIND, either express or implied. See the License for the specific language governing permissions and limitations under the License.

Apache 2.0 License

Version 2.0, January 2004

<http://www.apache.org/licenses/>

TERMS AND CONDITIONS FOR USE, REPRODUCTION, AND DISTRIBUTION

1. Definitions.

"License" shall mean the terms and conditions for use, reproduction, and distribution as defined by Sections 1 through 9 of this document.

"Licensor" shall mean the copyright owner or entity authorized by the copyright owner that is granting the License.

"Legal Entity" shall mean the union of the acting entity and all other entities that control, are controlled by, or are under common control with that entity. For the purposes of this definition, **"control"** means (i) the power, direct or indirect, to cause the direction or management of such entity, whether by contract or otherwise, or (ii) ownership of fifty percent (50%) or more of the outstanding shares, or (iii) beneficial ownership of such entity.

"You" (or **"Your"**) shall mean an individual or Legal Entity exercising permissions granted by this License.

"Source" form shall mean the preferred form for making modifications, including but not limited to software source code, documentation source, and configuration files.

"Object" form shall mean any form resulting from mechanical transformation or translation of a Source form, including but not limited to compiled object code, generated documentation, and conversions to other media types.

"Work" shall mean the work of authorship, whether in Source or Object form, made available under the License, as indicated by a copyright notice that is included in or attached to the work (an example is provided in the Appendix below).

"Derivative Works" shall mean any work, whether in Source or Object form, that is based on (or derived from) the Work and for which the editorial revisions, annotations, elaborations, or other modifications represent, as a whole, an original work of authorship. For the purposes of this License, Derivative Works shall not include works that remain separable from, or merely link (or bind by name) to the interfaces of, the Work and Derivative Works thereof.

"Contribution" shall mean any work of authorship, including the original version of the Work and any modifications or additions to that Work or Derivative Works thereof, that is intentionally submitted to Licensor for inclusion in the Work by the copyright owner or by an individual or Legal Entity authorized to submit on behalf of the copyright owner. For the purposes of this definition, **"submitted"** means any form of electronic, verbal, or written communication sent to the Licensor or its representatives, including but not limited to communication on electronic mailing lists, source code control systems, and issue tracking systems that are managed by, or on behalf of, the Licensor for the purpose of discussing and improving the Work, but excluding communication that is conspicuously marked or otherwise designated in writing by the copyright owner as **"Not a Contribution."**

"Contributor" shall mean Licensor and any individual or Legal Entity on behalf of whom a Contribution has been received by Licensor and subsequently incorporated within the Work.

2. Grant of Copyright License. Subject to the terms and conditions of this License, each Contributor hereby grants to You a perpetual, worldwide, non-exclusive, no-charge, royalty-free, irrevocable copyright license to reproduce, prepare Derivative Works of, publicly display, publicly perform, sublicense, and distribute the Work and such Derivative Works in Source or Object form.

3. Grant of Patent License. Subject to the terms and conditions of this License, each Contributor hereby grants to You a perpetual, worldwide, non-exclusive, no-charge, royalty-free, irrevocable (except as stated in this section) patent license to make, have made, use, offer to sell, sell, import, and otherwise transfer the Work, where such license applies only to those patent claims licensable by such Contributor that are necessarily infringed by their Contribution(s) alone or by combination of their Contribution(s) with the Work to which such Contribution(s) was submitted. If You institute patent litigation against any entity (including a cross-claim or counterclaim in a lawsuit) alleging that the Work or a Contribution incorporated within the Work constitutes direct or contributory patent infringement, then any patent licenses granted to You under this License for that Work shall terminate as of the date such litigation is filed.

4. Redistribution. You may reproduce and distribute copies of the Work or Derivative Works thereof in any medium, with or without modifications, and in Source or Object form, provided that You meet the following conditions:

- You must give any other recipients of the Work or Derivative Works a copy of this License; and
- You must cause any modified files to carry prominent notices stating that You changed the files; and
- You must retain, in the Source form of any Derivative Works that You distribute, all copyright, patent, trademark, and attribution notices from the Source form of the Work, excluding those notices that do not pertain to any part of the Derivative Works; and
- If the Work includes a **"NOTICE"** text file as part of its distribution, then any Derivative Works that You distribute must include a readable copy of the attribution notices contained within such NOTICE file, excluding those notices that do not pertain to any part of the Derivative Works, in at least one of the following places: within a NOTICE text file distributed as part of the Derivative Works; within the Source form or documentation, if provided along with the Derivative Works; or, within a display generated by the Derivative Works, if and wherever such third-party notices normally appear. The contents of the NOTICE file are for informational purposes only and do not modify the License. You may add Your own attribution notices within Derivative Works that You distribute, alongside or as an addendum to the NOTICE text from the Work, provided that such additional attribution notices cannot be construed as modifying the License. You may add Your own copyright statement to Your modifications and may provide additional or different license terms and conditions for use, reproduction, or distribution of Your modifications, or for any such Derivative Works as a whole, provided Your use, reproduction, and distribution of the Work otherwise complies with the conditions stated in this License.

5. Submission of Contributions. Unless You explicitly state otherwise, any Contribution intentionally submitted for inclusion in the Work by You to the Licensor shall be under the terms and conditions of this License, without any additional terms or conditions. Notwithstanding the above, nothing herein shall supersede or modify the terms of any separate license agreement you may have executed with Licensor regarding such Contributions.

6. Trademarks. This License does not grant permission to use the trade names, trademarks, service marks, or product names of the Licensor,

except as required for reasonable and customary use in describing the origin of the Work and reproducing the content of the NOTICE file.

7. Disclaimer of Warranty. Unless required by applicable law or agreed to in writing, Licensor provides the Work (and each Contributor provides its Contributions) on an "AS IS" BASIS, WITHOUT WARRANTIES OR CONDITIONS OF ANY KIND, either express or implied, including, without limitation, any warranties or conditions of TITLE, NON-INFRINGEMENT, MERCHANTABILITY, or FITNESS FOR A PARTICULAR PURPOSE. You are solely responsible for determining the appropriateness of using or redistributing the Work and assume any risks associated with Your exercise of permissions under this License.

8. Limitation of Liability. In no event and under no legal theory, whether in tort (including negligence), contract, or otherwise, unless required by applicable law (such as deliberate and grossly negligent acts) or agreed to in writing, shall any Contributor be liable to You for damages, including any direct, indirect, special, incidental, or consequential damages of any character arising as a result of this License or out of the use or inability to use the Work (including but not limited to damages for loss of goodwill, work stoppage, computer failure or malfunction, or any and all other commercial damages or losses), even if such Contributor has been advised of the possibility of such damages.

9. Accepting Warranty or Additional Liability. While redistributing the Work or Derivative Works thereof, You may choose to offer, and charge a fee for, acceptance of support, warranty, indemnity, or other liability obligations and/or rights consistent with this License. However, in accepting such obligations, You may act only on Your own behalf and on Your sole responsibility, not on behalf of any other Contributor, and only if You agree to indemnify, defend, and hold each Contributor harmless for any liability incurred by, or claims asserted against, such Contributor by reason of your accepting any such warranty or additional liability.

END OF TERMS AND CONDITIONS

startup_ARMCM0plus.s , V1.01

CMSIS Core Device Startup File for ARMCM0plus Device Series

Copyright (c) 2012 ARM LIMITED

All rights reserved.

Redistribution and use in source and binary forms, with or without modification, are permitted provided that the following conditions are met:

- Redistributions of source code must retain the above copyright notice, this list of conditions and the following disclaimer.
- Redistributions in binary form must reproduce the above copyright notice, this list of conditions and the following disclaimer in the documentation and/or other materials provided with the distribution.
- Neither the name of ARM nor the names of its contributors may be used to endorse or promote products derived from this software without specific prior written permission.

THIS SOFTWARE IS PROVIDED BY THE COPYRIGHT HOLDERS AND CONTRIBUTORS "AS IS" AND ANY EXPRESS OR IMPLIED WARRANTIES, INCLUDING, BUT NOT LIMITED TO, THE IMPLIED WARRANTIES OF MERCHANTABILITY AND FITNESS FOR A PARTICULAR PURPOSE ARE DISCLAIMED. IN NO EVENT SHALL COPYRIGHT HOLDERS AND CONTRIBUTORS BE LIABLE FOR ANY DIRECT, INDIRECT, INCIDENTAL, SPECIAL, EXEMPLARY, OR CONSEQUENTIAL DAMAGES (INCLUDING, BUT NOT LIMITED TO, PROCUREMENT OF SUBSTITUTE GOODS OR SERVICES; LOSS OF USE, DATA, OR PROFITS; OR BUSINESS INTERRUPTION) HOWEVER CAUSED AND ON ANY THEORY OF LIABILITY, WHETHER IN CONTRACT, STRICT LIABILITY, OR TORT (INCLUDING NEGLIGENCE OR OTHERWISE) ARISING IN ANY WAY OUT OF THE USE OF THIS SOFTWARE, EVEN IF ADVISED OF THE POSSIBILITY OF SUCH DAMAGE.

Warranty Disclaimer

This product contains Open Source Software components which underly Open Source Software Licenses. Please note that Open Source

Licenses contain disclaimer clauses. The text of the Open Source Licenses that apply are included in this manual under "Legal Information and Licenses".

Servicekontakte
Service Contacts
Contacts de Service
Contactos de Servicio



<https://www.bosch-pt.com/serviceaddresses>

Garantiebedingungen
Guarantee Conditions
Conditions de Garantie
Condiciones de Garantía



<https://www.bosch-pt.com/guarantee/202601>